

MIDTERM COLLECTED QUESTIONS OF PATHOLOGY 018

1- A biopsy was taken from a patient and it was not cancer. Instead, they found out that it was chronic inflammation, what did they see?

- a-Fibrosis, macrophages, lymphocytes, plasma cells
- b-Neutrophils and macrophages
- c-Eosinophils
- d-Histamine and Heparin

2- In chronic gastric reflux, squamous epithelium may transform into columnar epithelium in a process called:

- a-Hyperplasia
- b-Atrophy
- c-Hypertrophy
- d-Metaplasia

3-Brain ischemia is characterized by:

- a-Coagulative necrosis
- b-Caseous necrosis
- c-Liquefactive necrosis
- d-Fibroid necrosis

4-A hunter is present with skin rash after direct contact with mushroom. Tests show that no microorganisms are involved but show also a huge number of IgE and mast cells. What is the right diagnosis ?

- a-Parasitic infection
- b-Bacterial infection
- c-Autoimmune disease
- d-Acute allergic reaction

5-IL-17 is mainly responsible for:

- a-Neutrophil recruitment
- b-Macrophage maturation
- c-T cells maturation
- d-Eosinophil recruitment

6-A patient is present with myocardial damage caused by necrosis. Which of the following can be seen?

- a-Intact cell membrane
- b-Karyolysis
- c-Apoptotic bodies
- d-Shrinkage of cells

7- A specimen shows granuloma with caseous necrosis, which of the following is correct?

- a-It is an acute inflammation
- b-Using acid-fast stain most likely won't do anything
- c-You should rule out tuberculosis
- d-It is probably of unknown etiology

8-Which of the following is true regarding toll like receptors?

- a-They circulate in the blood
- b-Collectins are examples
- c-They are essential for chemotaxis
- d-They recognize PAMPs

9-Which of the following is true regarding inflammation?

- a-It is essential for body survival
- b-Strong inflammatory responses are always good
- c-Non-vascularised tissues can get inflamed
- d-There is no repair step in inflammation

10-Opsonization is best described as:

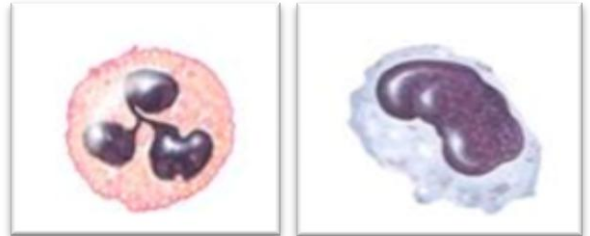
- a-Recognizing the pathogen

b-Coating the microbe to enhance phagocytosis

c-Following a specific chemical gradient

d-Activation of the complement system

11-Which of the following statements is true regarding these pictures?



a-The cell on the left is a monocyte

b-The cell on the left has half-life of 1-2 days

c-The cell on the right is a neutrophil

d-Both cells have the same half-life

12-Which of the following statements is true regarding steroids?

a-They are a potent inhibitor of phospholipases

b-They are inhibitors of COX-1

c-They induce immunity

d-They are considered as pro-inflammatory drugs

13-Which of the following pigments is found in sites of bruises?

a-Carbon

b-Lipofuscin

c-Hemosiderin

d-Melanin

14-Which of the following is true regarding M2 pathway?

a-It is also called the classical pathway

b-It is activated by the presence of microbes

c-It stops inflammation and promotes repair

d-Macrophages start producing IL-1 and chemokines

15-Which of the following enzymes are activated by apoptosis intrinsic pathway caused by accumulation of misfolded proteins?

a-endonucleases

b-Lipases

c-Caspases

d-Proteases

16- Which of the following is an example of physiologic hypertrophy?

a-Compensation after the removal of part of the liver

b-Cardiac enlargement in aortic valve disease

c-The change of columnar epithelium in cigarette smokers

d-Myometrium during pregnancy

17-The breast during lactation undergoes:

a-Hyperplasia

b-Atrophy

c-Hypertrophy

d-Metaplasia

18-48 year old tumor patient was given chemotherapeutic drugs to kill malignant cells. These cells are affected through:

a-Necrosis

b-Apoptosis

c-Hypertrophy

d-They are not affected

19-Which of the following conditions is most likely to be found in alcoholic patients?

a-Lipofuscin accumulation

b-Cholesterol esters accumulation

c-steatosis

d-Dystrophic calcification

20- Which of the following enzymes reduce oxidative stress?

- a-Nitric oxide synthase
- b-Glutathione peroxidase
- c-myeloperoxidase
- d-Proteases

21-Ischemia reperfusion injury is directly linked to:

- a-Protein misfolding
- b-Generation of ROS
- c-Toxins
- d-Necrosis

22-Which of the following is considered an anaphylatoxin ?

- a-C5A
- b-C3B
- c-IgG
- d-NO

23-A liver biopsy showed that a patient has a noncaseating granuloma. Which of the following disease can cause this condition?

- a-Tuberculosis
- b-Sarcoidosis
- c-Syphilis
- d-Asthma

24-TNF is a:

- a-Cytokine
- b-Chemokine
- c-Lipid
- d-Complement protein

25-Which of the following cells and molecules are involved in asthma?

- a-IgE and eosinophils
- b-Cytokines
- c-Macrophages and neutrophils
- d-Complement proteins

26-Which of the following is true regarding chemokines ?

- a-C3A is an example
- b-Factor H is an inhibitor for them
- c-They are involved in opsonization
- d-They have G-protein coupled receptors

27-Which of the following molecules is anti-apoptotic ?

- a-Bax
- b-P53
- c-BCL-2
- d-Bak

28-Stasis and Erythema are caused by:

- a-Leukocytes
- b-Expression of selectins
- c-PMN accumulation
- d-Histamine as a vasodilator

29- A patient is present with a red and swollen appendix and had to undergo appendectomy. No considerable amount of lymphocytes is found. Which of the following is correct?

- a-It is a chronic appendicitis
- b-Transudate fluid is found
- c-It is a purulent suppurative inflammation
- d-None of the above is correct

30-Which of the following are pain mediators?

- a-Chemokines
- b-Prostaglandins and bradykinin
- c-Histamine
- d-Platelet-activating factor

31-Weak adhesion to the endothelium is mediated by:

- a-LFA-1
- b-Integrins
- c-P and E selectins
- d-PECAM-1

32-Which of the following is eliminated through extrinsic pathway of apoptosis?

- a-Cells with many DNA mutations
- b-Accumulation of misfolded proteins
- c-Self reacting lymphocytes
- d-Cells with oxidative stress

33- Which of the following is true regarding this picture?

- a-It is the same mode of necrosis as in brain infarction
- b-The underlying tissue architecture is preserved
- c-It can be seen in focal bacterial infection
- d-It can be seen in tuberculosis



34- Which of the following is true regarding Nitric Oxide?

- a-Acts as a vasoconstrictor
- b-Produced without the need of enzymes
- c-A soluble gas derived from arginine
- d-Its concentration is always constant

35-What type of necrosis can be seen in this picture?

- a-Gangrenous necrosis
- b-Fibrinoid necrosis
- c-Fat necrosis
- d-Caseous necrosis



36- Acute phase proteins are best described as:

- a-Their levels are used to diagnose prolonged chronic inflammation
- b-C-reactive protein is the only example
- c-Specific indicators of certain diseases
- d-Non-specific indicator of acute inflammation

37-Which of the following is typical for apoptosis ?

- a-Disrupted plasma membrane
- b-Absence of inflammation
- c-Pyknosis and karyorrhexis
- d-Leakage of cell components

38- What causes effusion of fluids in the first stages of vascular phase?

- a-Endothelial injury
- b-Leukocytes recruitment
- c-Retraction of endothelium via mediators
- d-Margination

39-Caseous necrosis is most likely found in:

- a-Peritoneal cavity
- b-Tuberculosis
- c-Myocardial infarction
- d-Pancreatic tissue

40- Which of the following is a direct result of ROS damage?

a-Failure of ATP synthesis

b-Lactic acidosis

c-Detachment of ribosomes from ER

d-Lipid peroxidation

Answers

1	A	21	B
2	D	22	A
3	C	23	B
4	D	24	A
5	A	25	A
6	B	26	D
7	C	27	C
8	D	28	D
9	A	29	C
10	B	30	B
11	B	31	C
12	A	32	C
13	C	33	B
14	C	34	C
15	C	35	A
16	D	36	D
17	A	37	B
18	B	38	C
19	C	39	B
20	B	40	D

Samia Sami Simarin 🌟

Special Thanks For: Ameen Alsaras 🙏

"حَدَّقْنَا طَوِيلًا فِي السَّاعَةِ، وَنَسِينَا بِأَنَّا نَحْنُ الْبَطَّارِيَةُ." 🕒🌻

Good Luck!!