

# TEST BANK

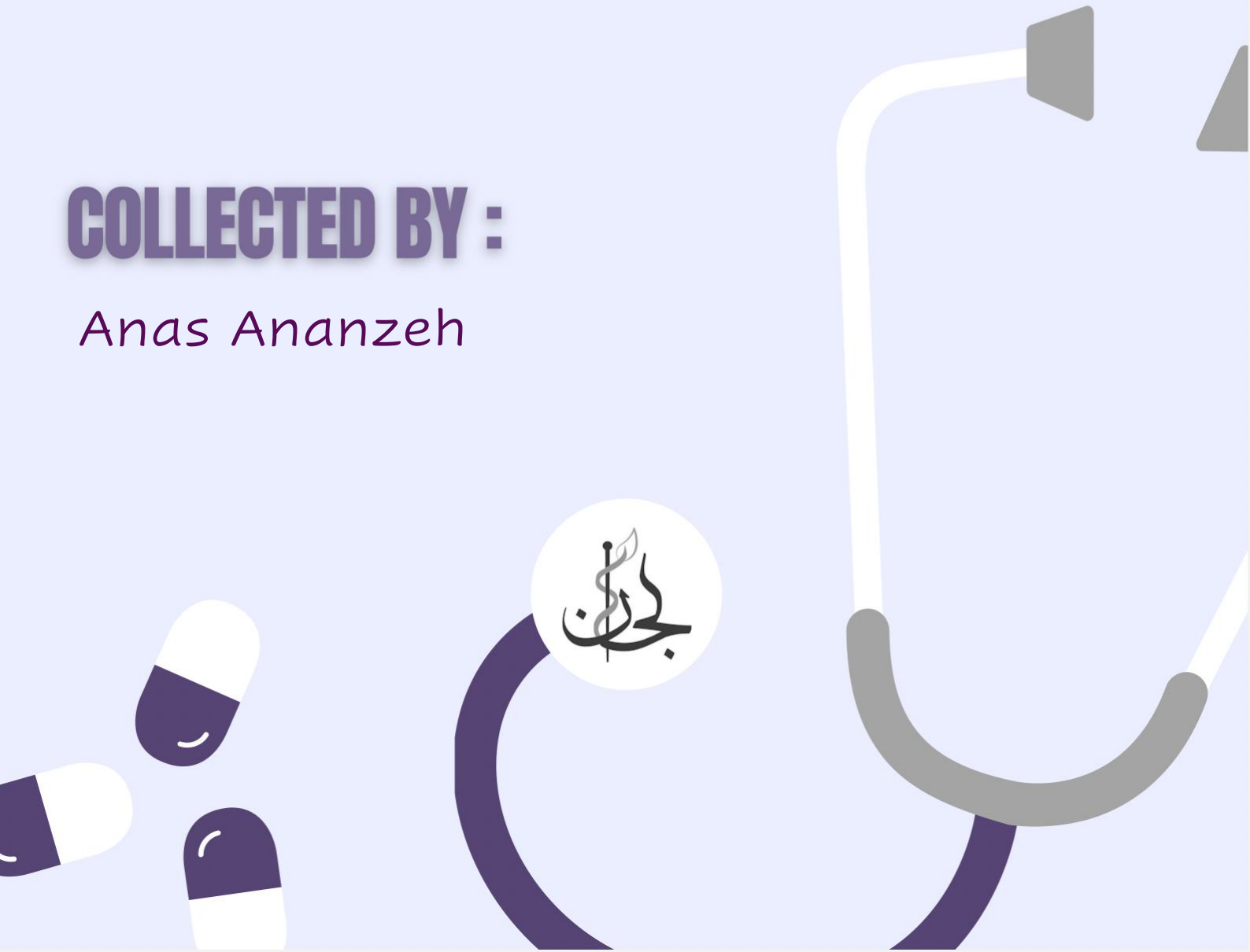
Doctor 2019

**SUBJECT:**

HLS Mid 019

**COLLECTED BY :**

Anas Ananzeh



# Mid 019

**Q1. Why 2,3 BPG is low in fetal tissues?**

Ans: Accelerate conversion to subsequent products

**Q2. Absolute polycythemia can be caused by:**

- A. Diarrhea
- B. Diuretic drugs
- C. Vomiting
- D. Carcinoma in renal cells

Ans: D

**Q3. When do we have massive reticulocytosis?**

Ans: sudden cut in varices

**Q4. One of these doesn't change between genders?**

Ans: MCV

**Q5. One characteristic has least value in differentiation between spleen and lymph nodes**

Ans: the presence of small cells with dark stained nucleus

**Q6. All of the following cells can be seen in the cortex of thymus except:**

- A. Macrophages
- B. Dendritic cells
- C. reticular epithelial cells
- D. Double positive T cells
- E. Double negative T cells

Answer: B

**Q7. which of the following is an adaptive mechanism in IDA?**

- A. Increased erythropoietin

B. Diminished hepcidin

Ans: B

**Q8. Defasirox is preferred over deforoxamine because :**

Answer: it's taken orally

**Q9. Related with vitamin B12 deficiency:**

Answer: diphyllbothrium latum

**Q10. Which of the following describes MWC model best:**

Answer: equilibrium changes upon oxygen binding

**Q11. can't be found in embryo?**

Answer: HB A2

**Q12. which of the following blood disorders doesn't cause pancytopenia?**

A)cooleys

B)complicated sickle cell

C)megaloblastic

D)myelodysplastic

E) PNH

Answer: A

**Q13. Not strictly a function of the blood?**

A. Maintains homeostasis

B. Transports hormones and vitamins

C. Plays a role in hemostasis

D. Carrying oxygen and CO<sub>2</sub>

E. defence against microbes and toxins

Answer: A

**Q14. not true about HbE?**

Answer: mutation at 6 position

**Q15. not a definite effect of vitamin b12 deficiency?**

- A) pernicious anemia
- B) megaloblastic anemia
- C) sterility
- D) neuropathy
- E) macrocytic hypochromic

Answer: E

**Q16. cell with the same size of erythrocyte and blue cytoplasm with large nucleus?**

Answer: lymphocyte

**Q17. Which one of the following is a correct pair?**

Answer: Basophil / Histamine

**Q18. Correct sequence of blood cells producing sites:**

Answer: Yolk sac -> Liver -> Bone marrow

**Q19. all of the following are functions of cortical TEC except:**

Answer: Expression of special proteins

**Q20. Correct pair:**

Answer: methyldopa / spherocytosis

**Q21. In parasitic infection which of the following increases:**

Answer: Cells with acidophilic granular bilobular nucleus

**Q22. Which of the following RBCs are macrocytic and normochromic?**

Answer: mcv=115, mchc=33

**Q23. Which of the following isn't affected by CO2 on hemoglobin?**

Answer: 2,3 BPG

**Q24. Hb H is caused by: (BIOCHEM)**

Answer: deletion of 3 genes

**Q25. Hb Barts is caused by: (PATHO)**

Answer: deletion of 3 genes

**Q26. What happens in IDA?**

Answer: Platelets ↑ + TIBC ↑

**Q27. Which statement is wrong about granulopoiesis?**

Answer: Precursors have lobulated nucleus

**Q28. Wrong statement:**

Answer: Neutrophils circulate for days in blood after maturation

**Q.29 Choose the wrong statements:**

A. Lowest erythropoiesis occurs in pelvis and vertebrae

&

B. All blood cells are formed at the same time in the fetus during the first 3 months

Answer: A&B - هذا السؤال كان بده الغلط الأغلط من الغلط الثاني (( وانحذف

**Q30. Which of the following statements regarding oncotic pressure is incorrect:**

A. Also called colloidal osmotic pressure

B. Accounts for a major part of the total osmotic pressure

C. Regulates fluid movement between tissue and capillaries

D. Mainly caused by the plasma protein Albumin

E. A second function of the protein albumin is to transport products, such as fatty acids, hormones, drugs, etc..

Answer: B

**Q31. Mediterranean G6pd isn't manifested by:**

- A. unstable enzyme
- B. large deletions

Answer: A+B (DELETED)

**Q32. Choose the true statement about hemoglobin:**

- a. hemoglobin saturation curve is dependent on PO<sub>2</sub> and hemoglobin concentration
- b. O<sub>2</sub> content is dependent only on PO<sub>2</sub> and independent on Hemoglobin concentration
- c. hemoglobin saturation curve is independent on hemoglobin concentration

Answer: C

**Q33. Choose the wrong statement:**

Answer: Granulocytes have irregular shape in blood, and a spherical shape in connective tissue

**Q34. Which of the following shifts HB saturation curve to the left?**

- A. 2,3 BPG ↑
- B. CO<sub>2</sub> ↑
- C. 2,3 BPG ↓
- D. Temperature ↑

Answer: C

**Q35. Which of the following isn't true about lymphnodes:**

Answer: post capillary venules are located in the outer cortex

**Q36. Choose the wrong statement:**

- A. All iron is absorbed in the duodenum
- B. Men have lower iron than women

Answer: B

**Q37. Activated B lymphocytes in spleen are located in:**

Answer: Malpighian corpuscles

**Q38. Choose the wrong statement:**

Answer: Erythrocyte contains granules

**Q39. Choose the wrong statement about spleen:**

Answer: it contains post capillary venules

**Q40. What can be found inside the red bone marrow?**

Answer: Hematopoietic stem cells + sinusoidal capillaries + reticular tissue

الحمد لله دائماً وأبداً