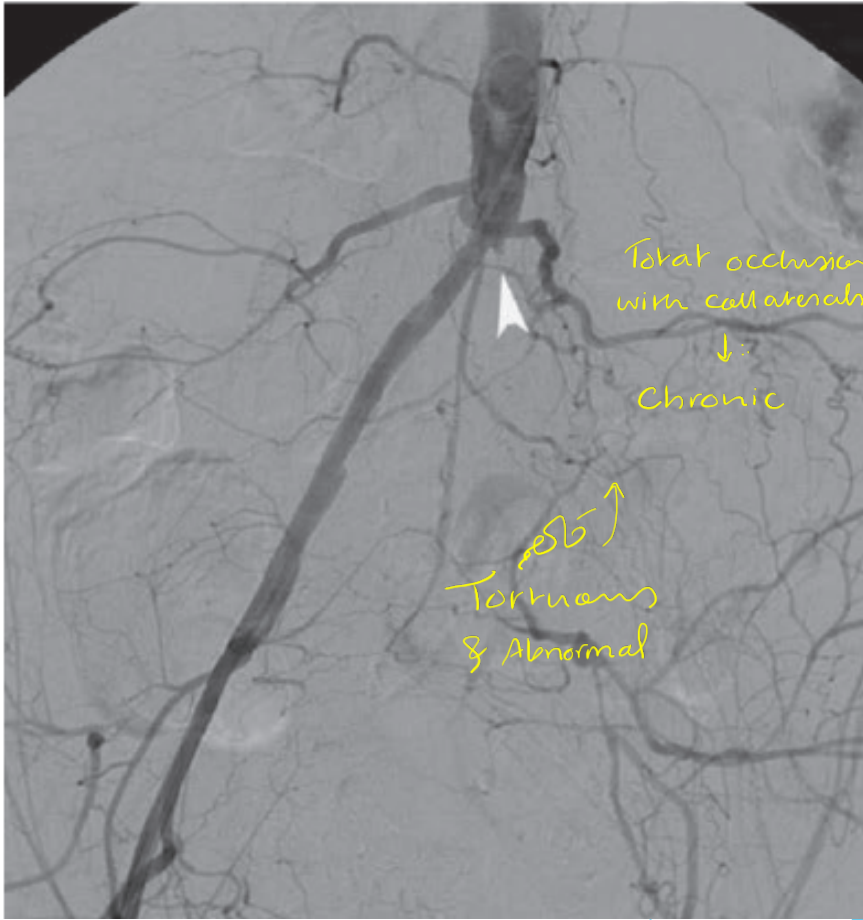


Tutorial

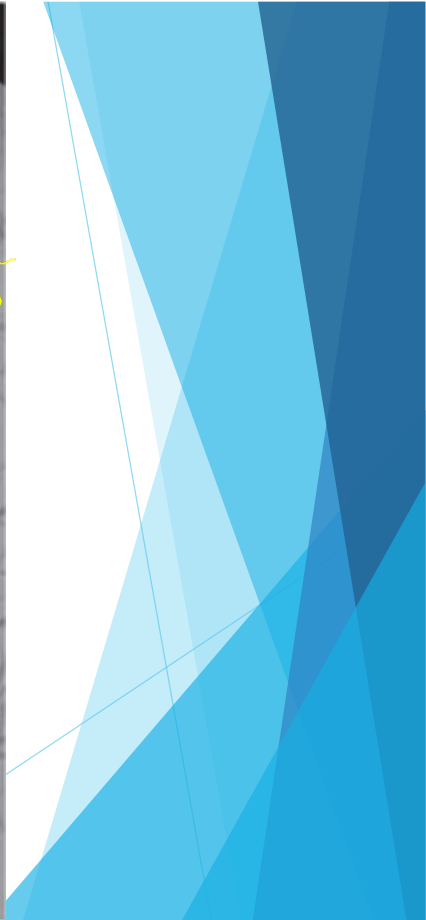


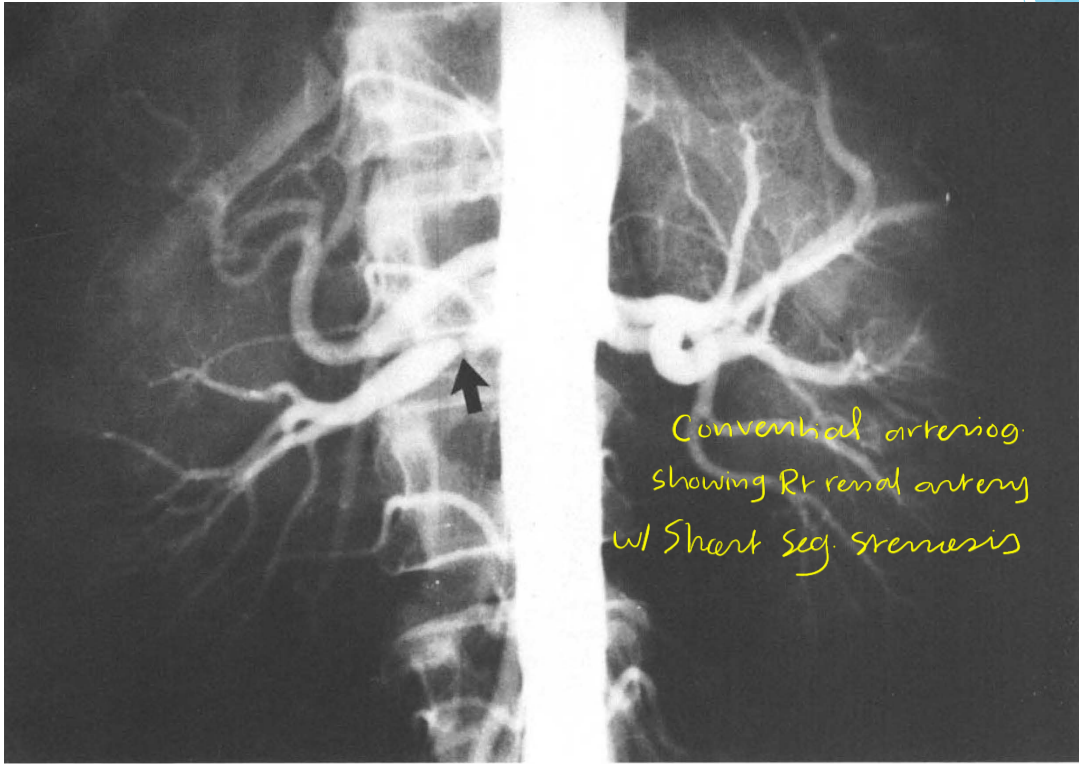
Total occlusion
with collaterals



Chronic

Tortuous
& Abnormal

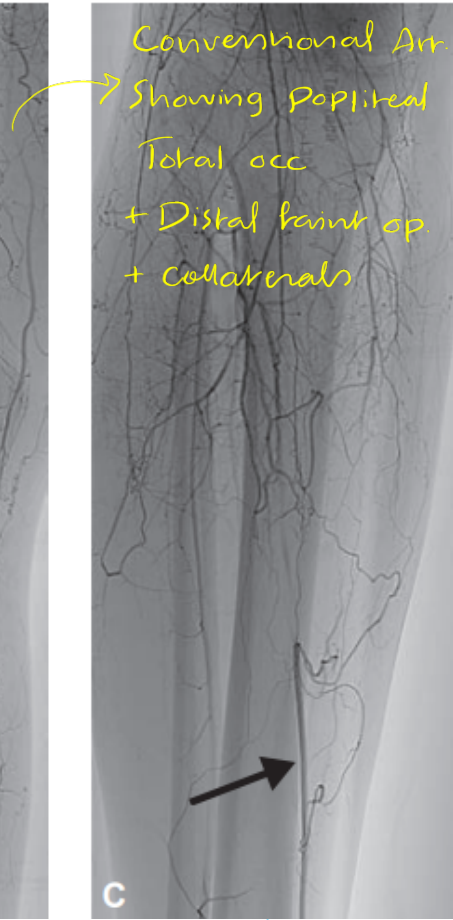




Conventional arteriogram
showing Rt renal artery
w/ Short seg. stenosis

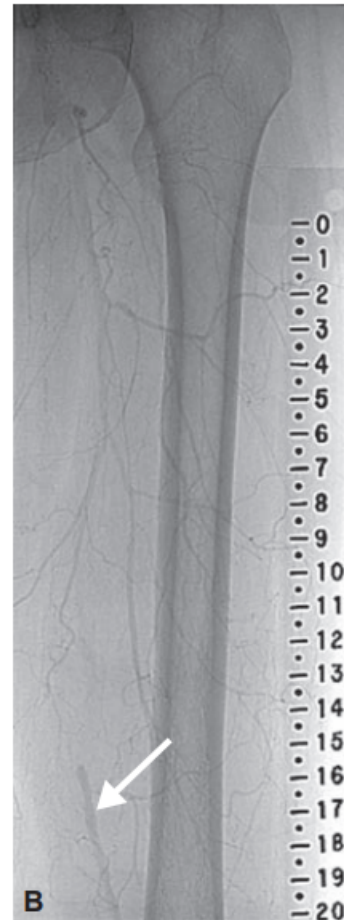
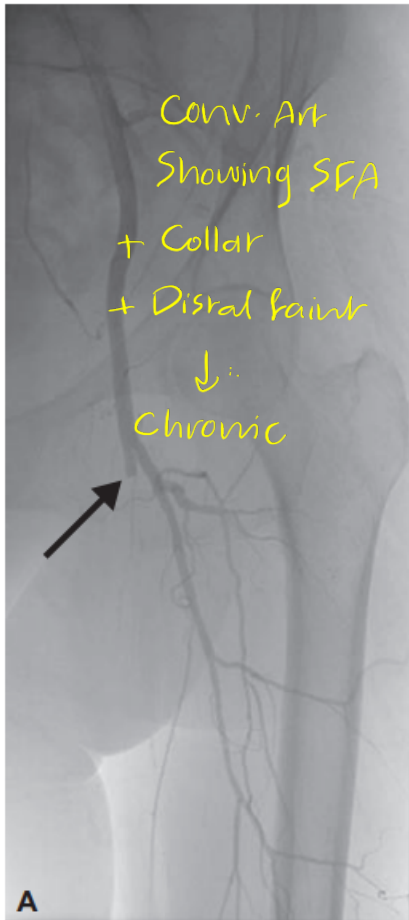


B

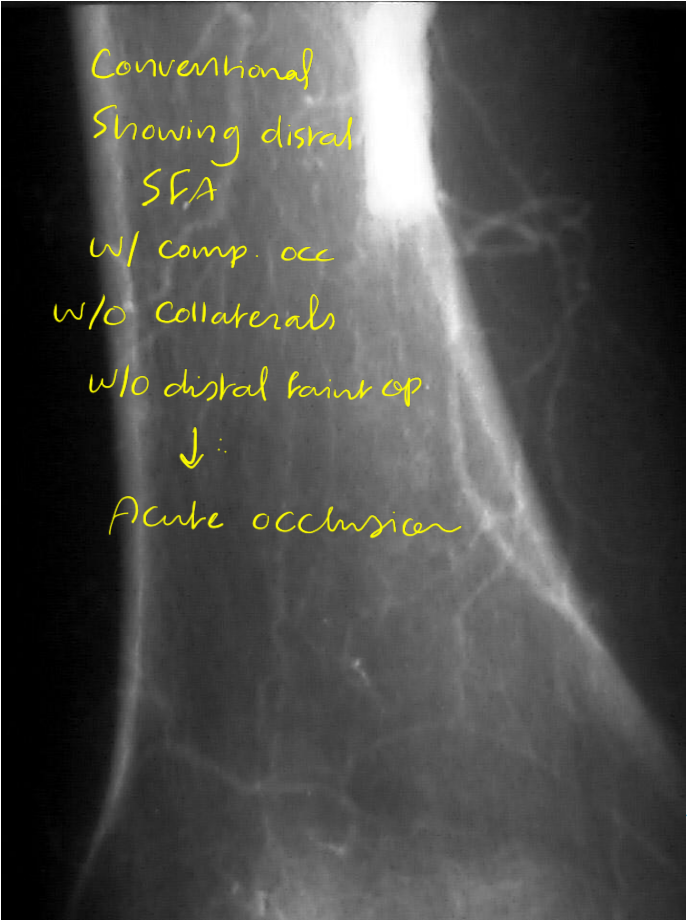


C

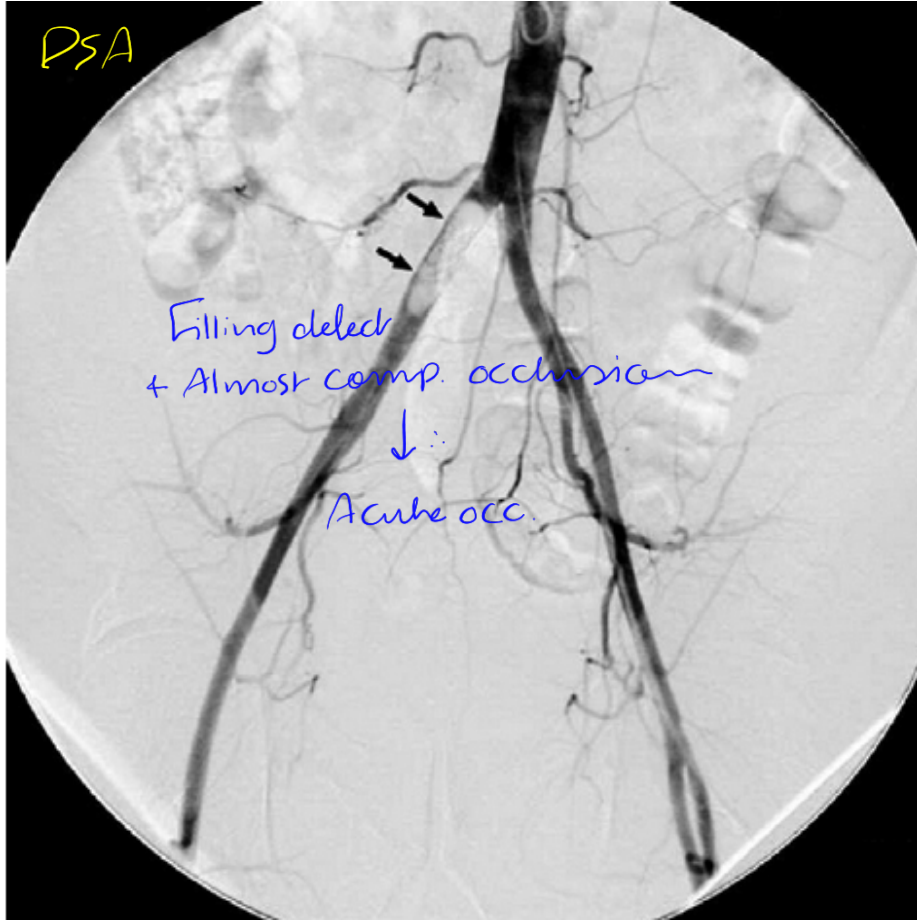




Conventional
Showing distal
SFA
w/ comp. occ
w/o collaterals
w/o distal faint op.
↓ ∴
Acute occlusion



DSA



Filling defect
+ Almost comp. occlusion



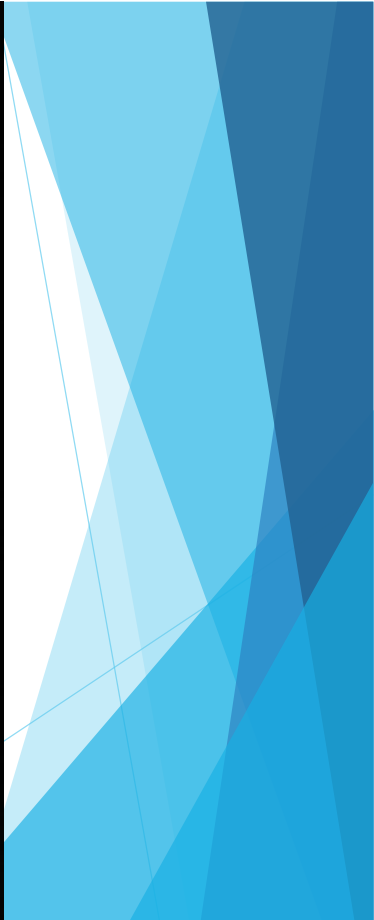
Acute occ.



Conventional aort
Showing pop. A
w/o collat.

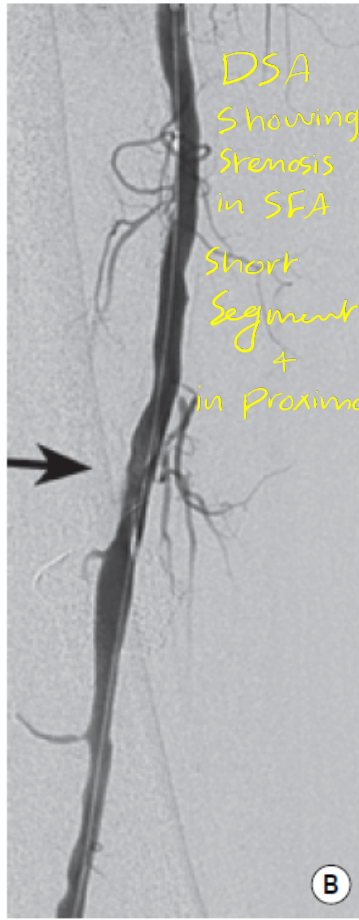


Acute

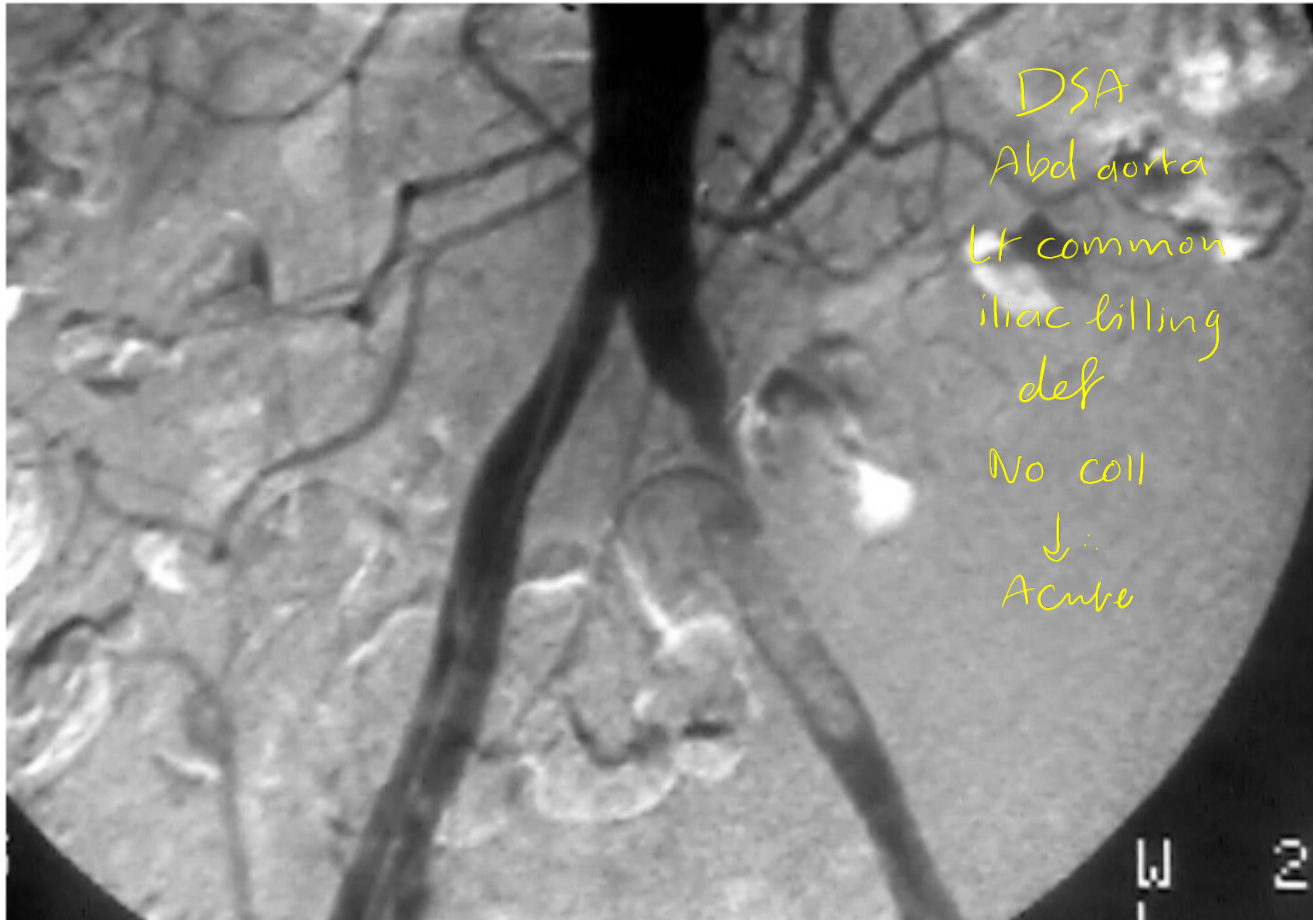




A

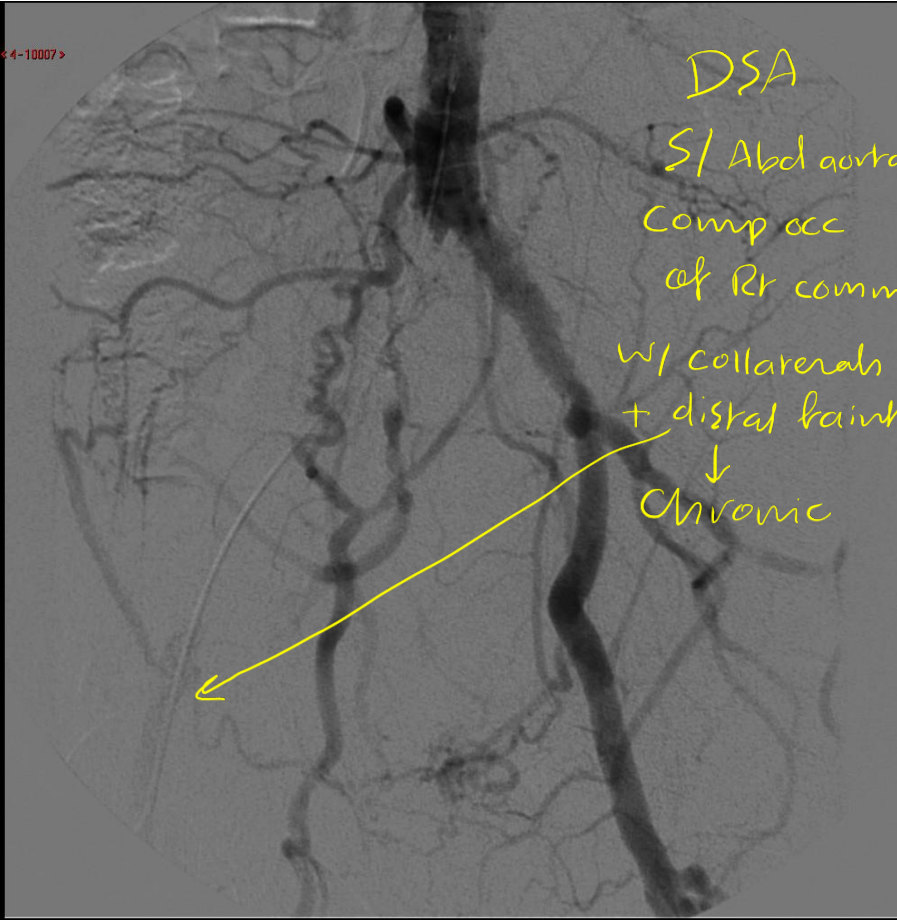


B



DSA
Abd aorta
Lt common
iliac filling
def
No coll
↓
Acute

W
21



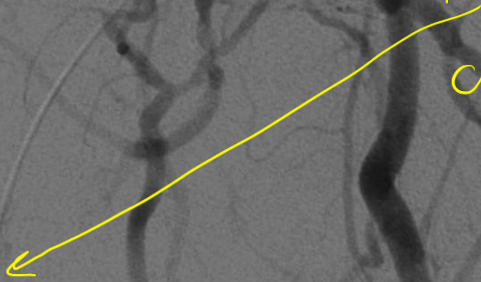
DSA

S/ Abdom aorta

Comp occ
of Rr common

w/ collaterals
+ distal branch

↓
Chronic



Conventional arteriogram

Showing bilat Popliteal a.

Rt w/ total occ prox

Lt = = = dist

No collat



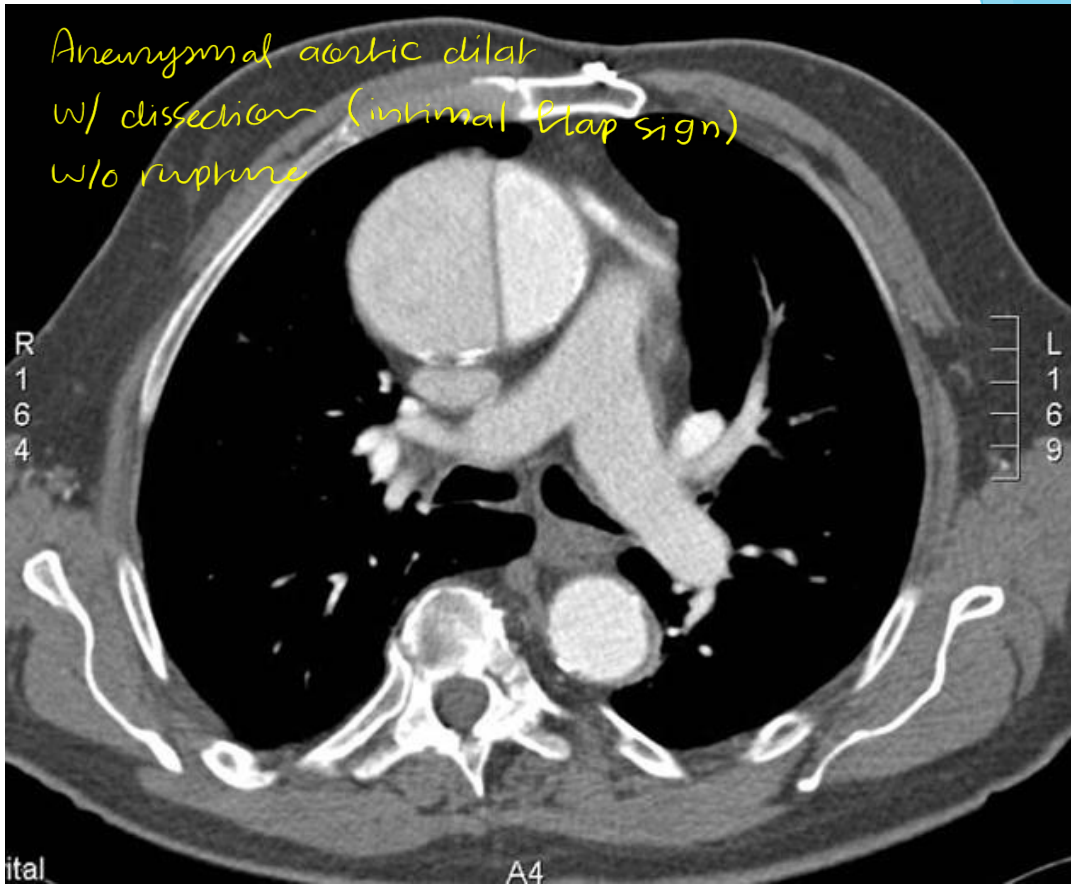
Acute bilat
Popliteal art
occ

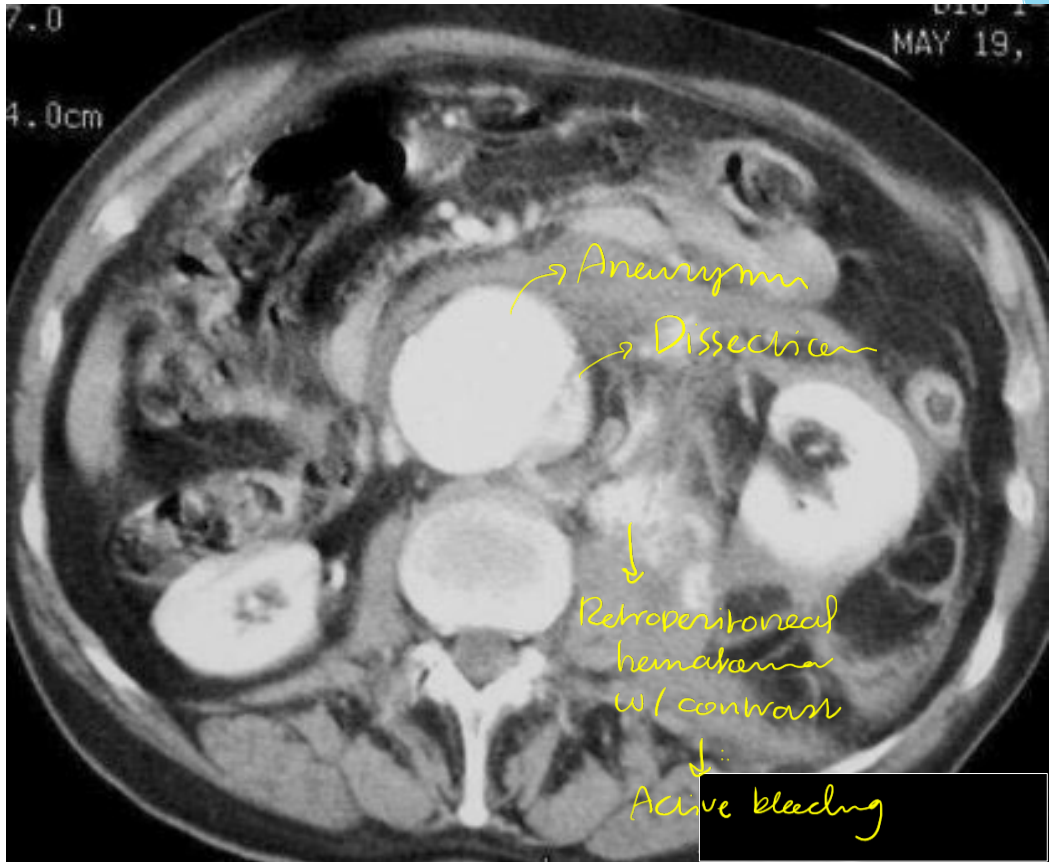
Showing emboli

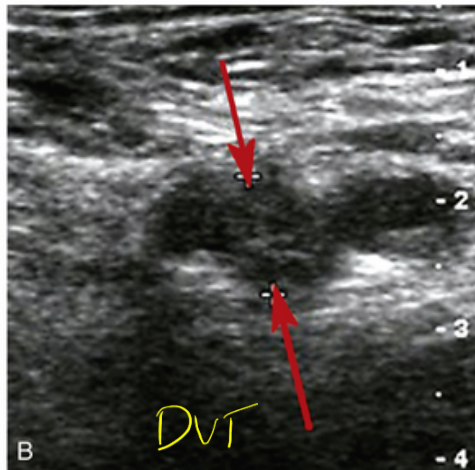
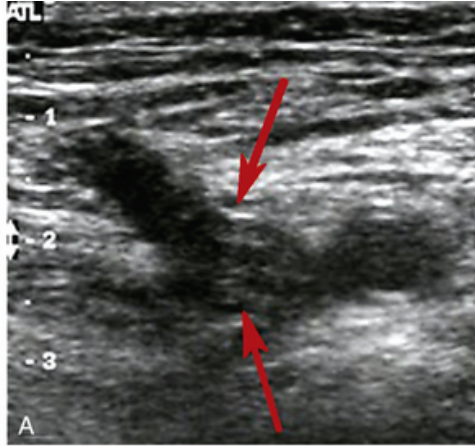
∴ A-fib (mostly)

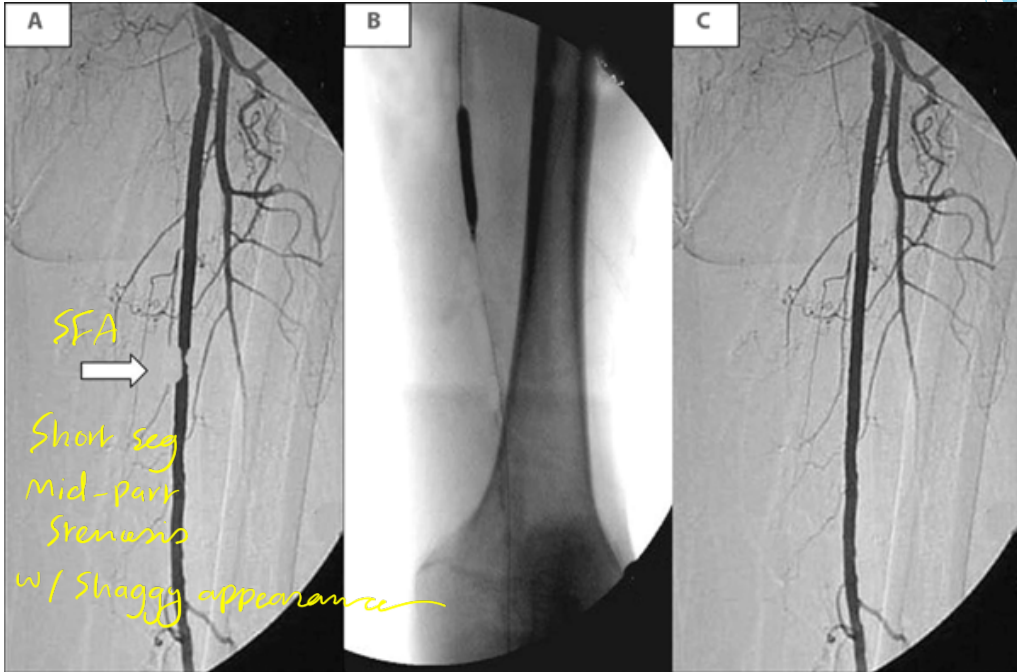
PRE UK

Aneurysmal aortic dilat
w/ dissection (intimal flap sign)
w/o rupture









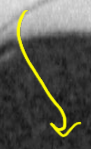
Conventional venogram
Showing subclav. & axillary
vein

w/ total occlusion

w/ collaterals } Bc

w/ distal faint op

Dx: Chronic DVT



Abd CT, axial

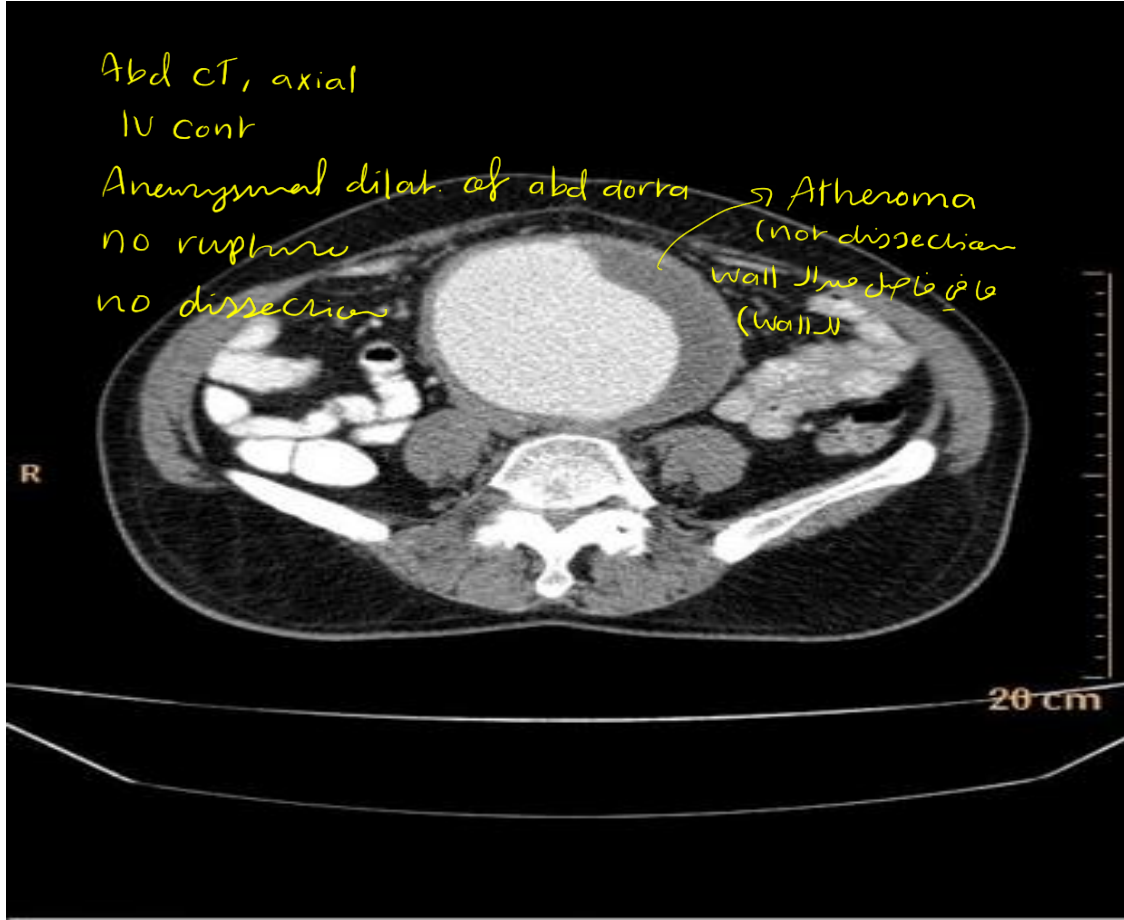
IV cont

Aneurysmal dilat. of abd aorta

no rupture

no dissection

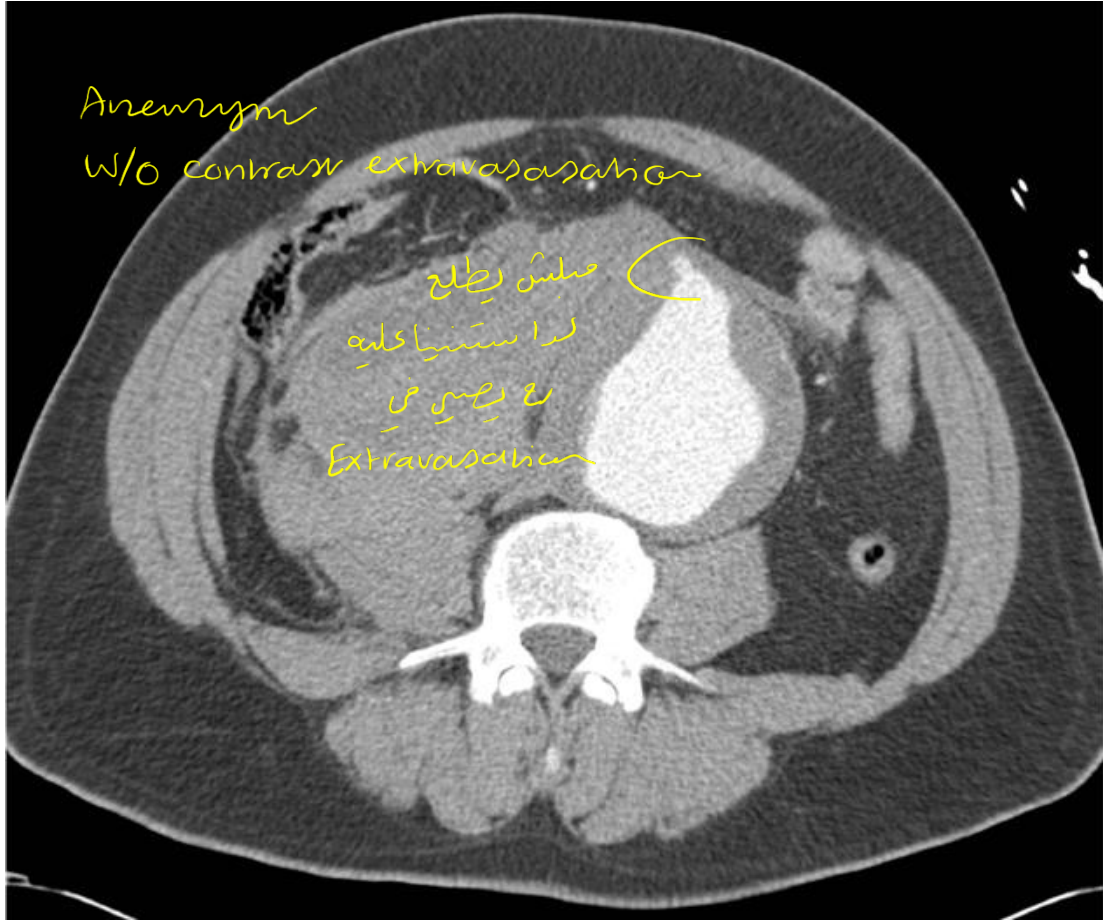
→ Atheroma
(not dissection
wall) → plaque
(wall)

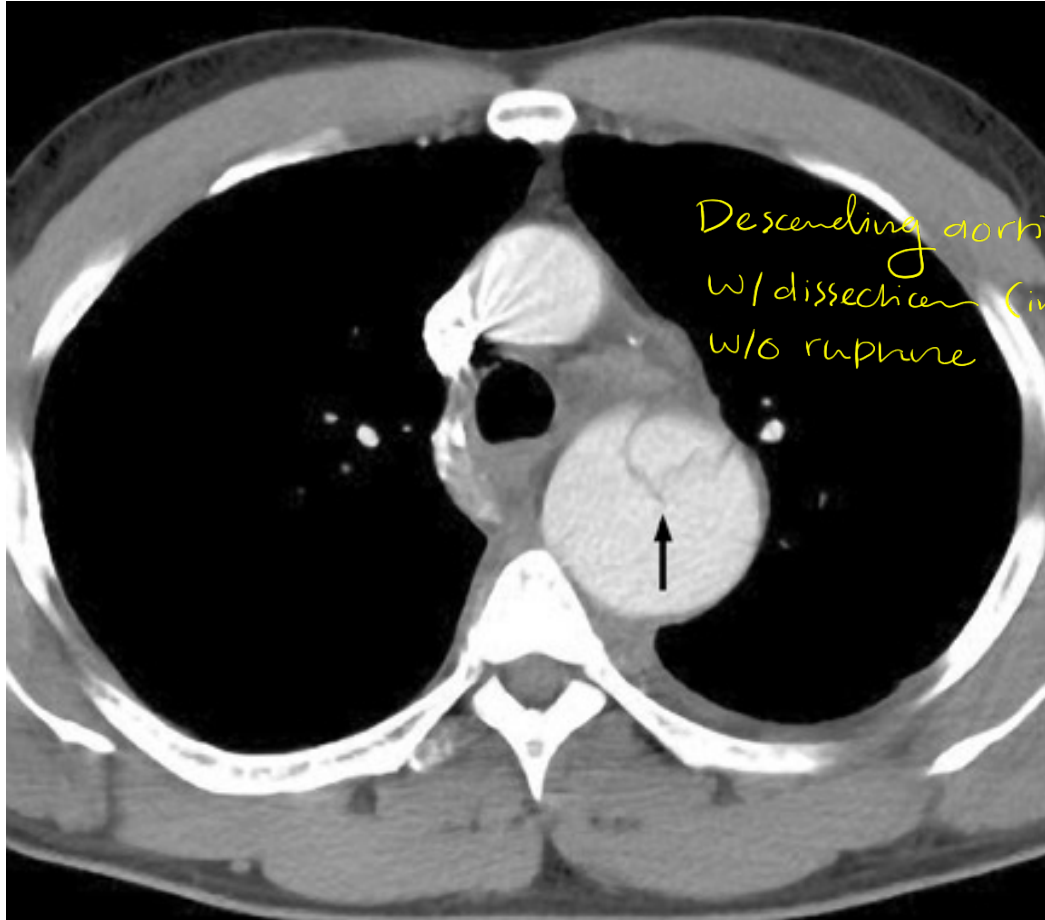


Aneurysm

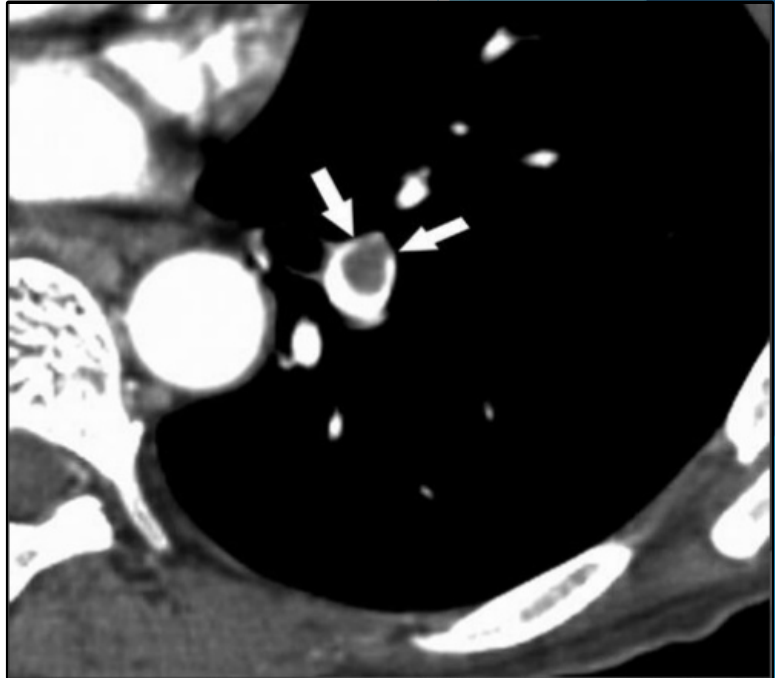
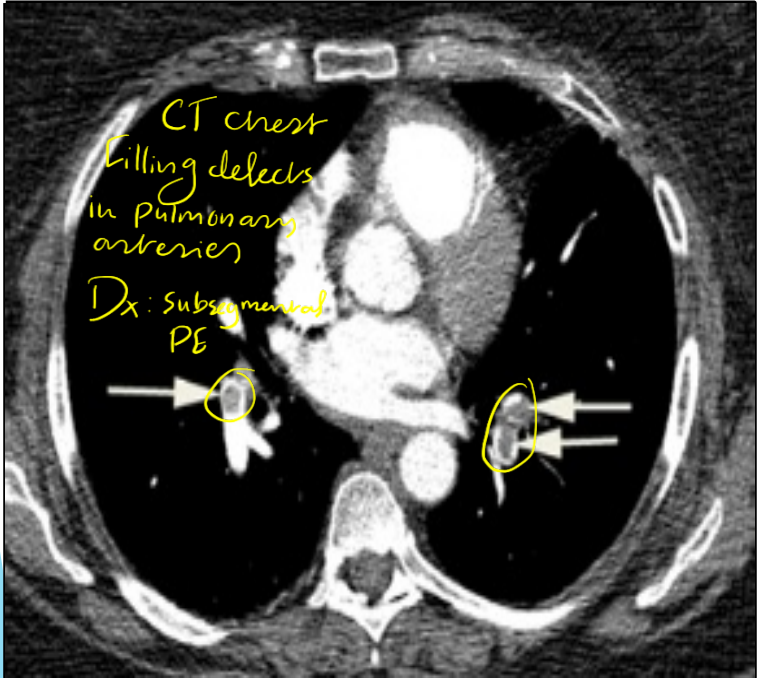
w/o contrast extravasation

فيلس رطاح
لدا ستنيا عليه
ع ريسين مي
Extravasation





Descending aortic aneurysm
w/ dissection (intimal flap
w/o rupture
Sign)



Chest MRI (maybe the pt has contrast allergy)

Showing arch of aorta

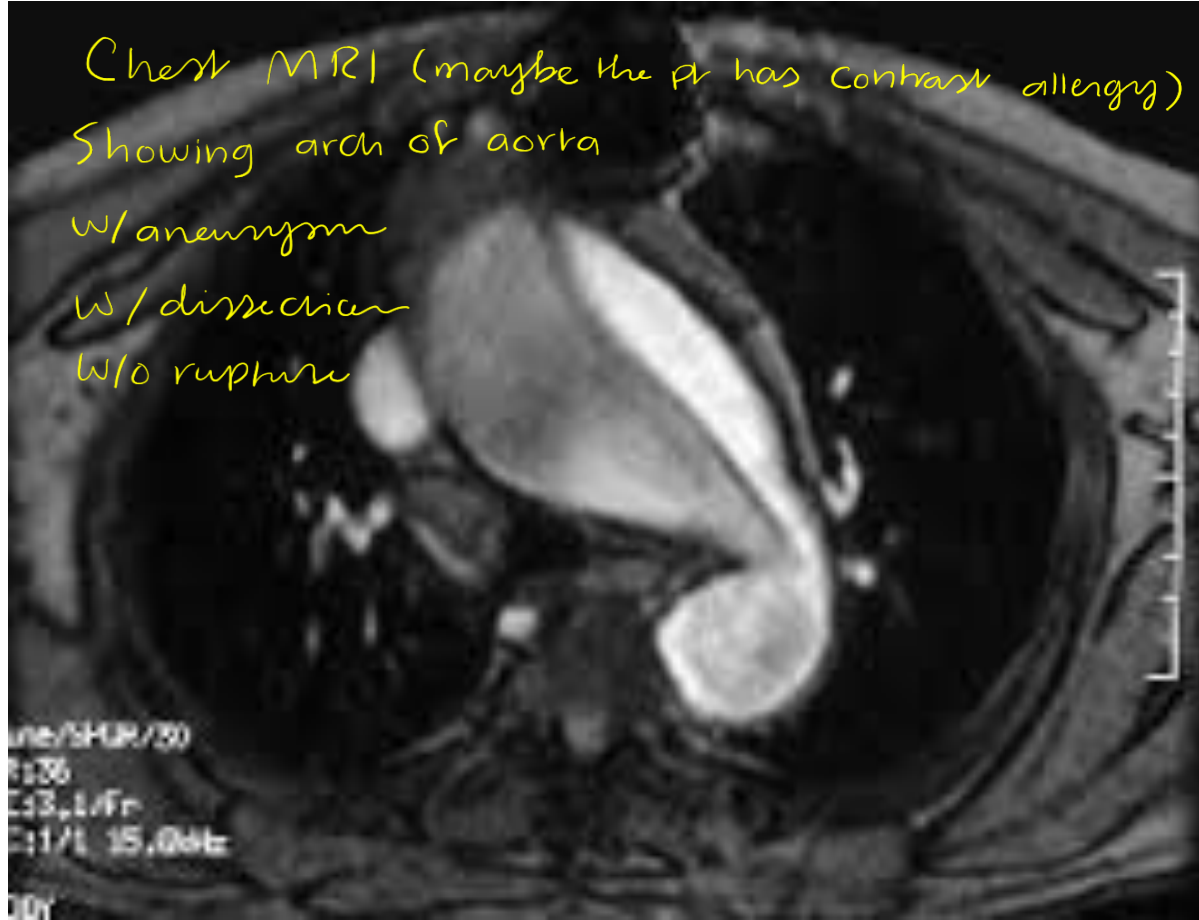
w/ aneurysm

w/ dissection

w/o rupture

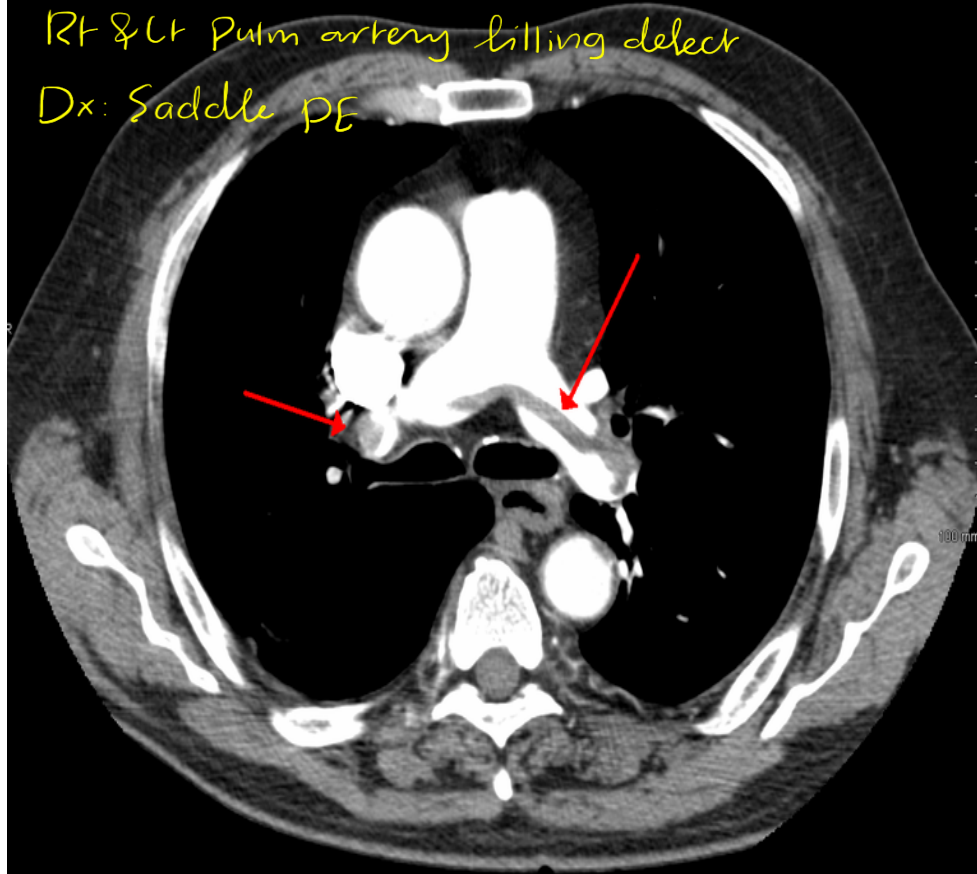
Line/SHUR/30
R136
E13.1/Fr
E11/1 15.0kHz

001



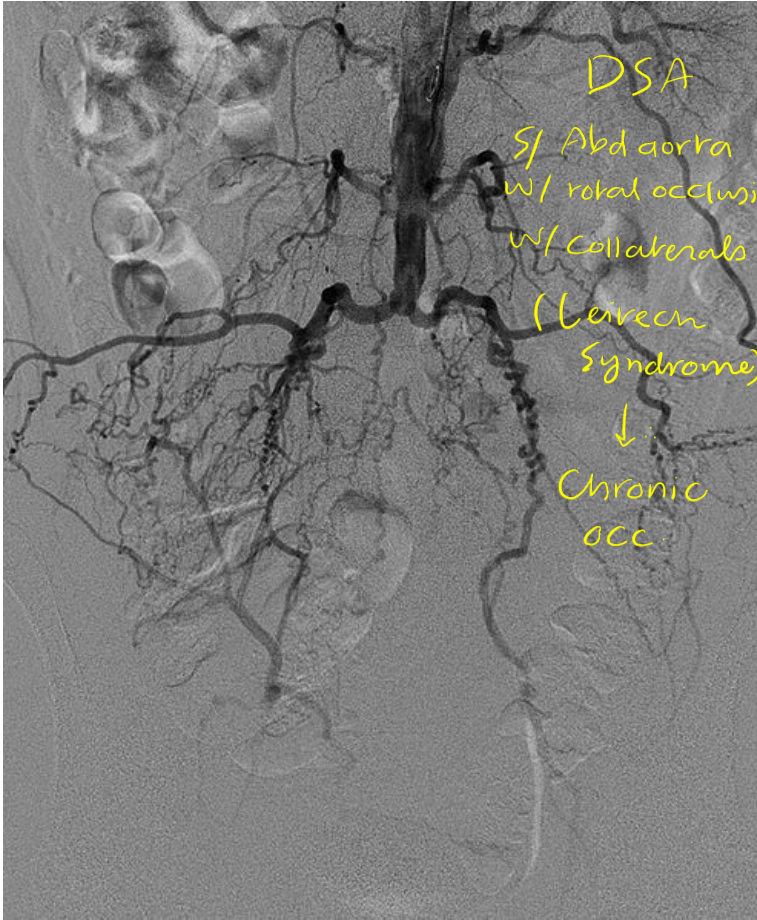
RT & Lt Pulm artery filling defect

Dx: Saddle PE



< 3 - 10007 (ALLE) >





DSA

Sj Abd aorta
w/ total occlusion
w/ collaterals

(Levein
Syndrome)



Chronic
occ.

42.5cm Abd CT

- Axial

- w/o contrast

- AAA

- w/ rupture

(can't tell if active

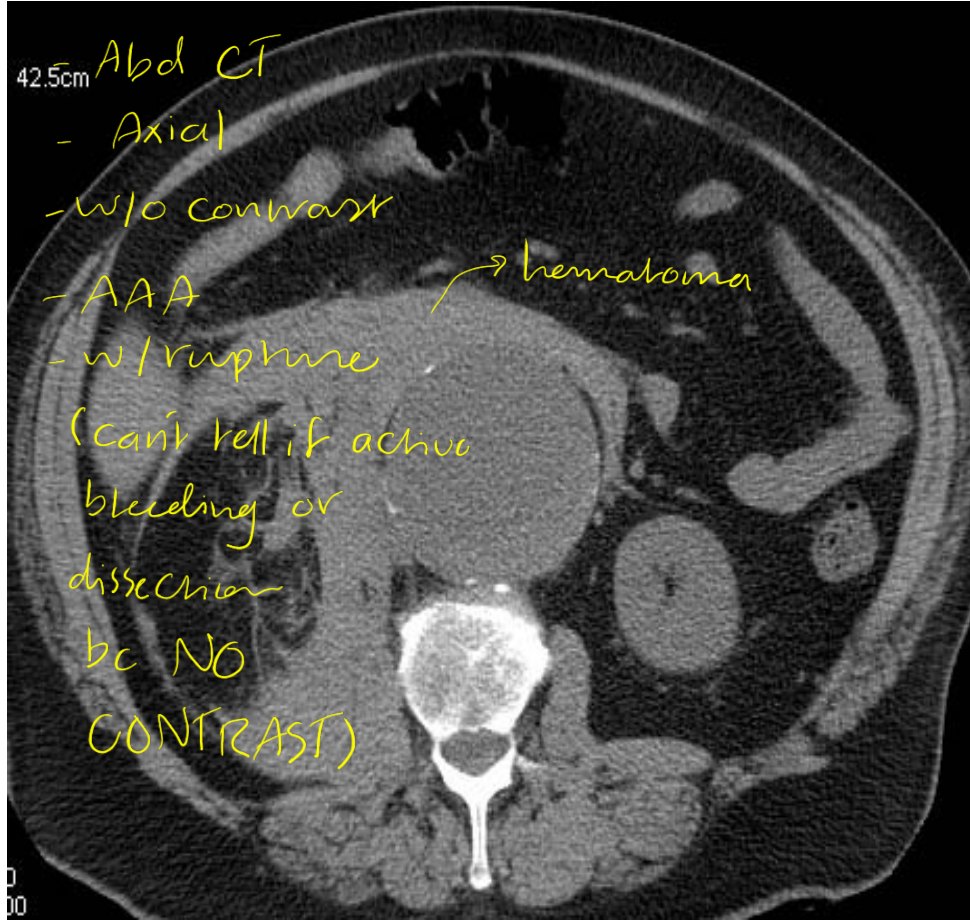
bleeding or

dissection

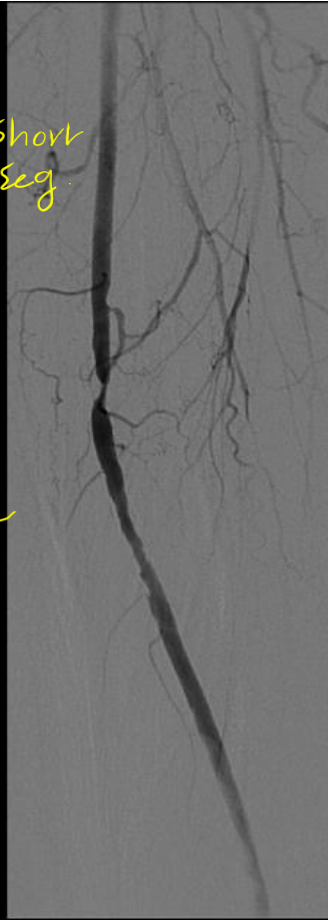
bc NO

CONTRAST)

→ hematoma



DSA
Stenosis ^{→ short} seg
Proximal
SFA
+ shaggy
appearance



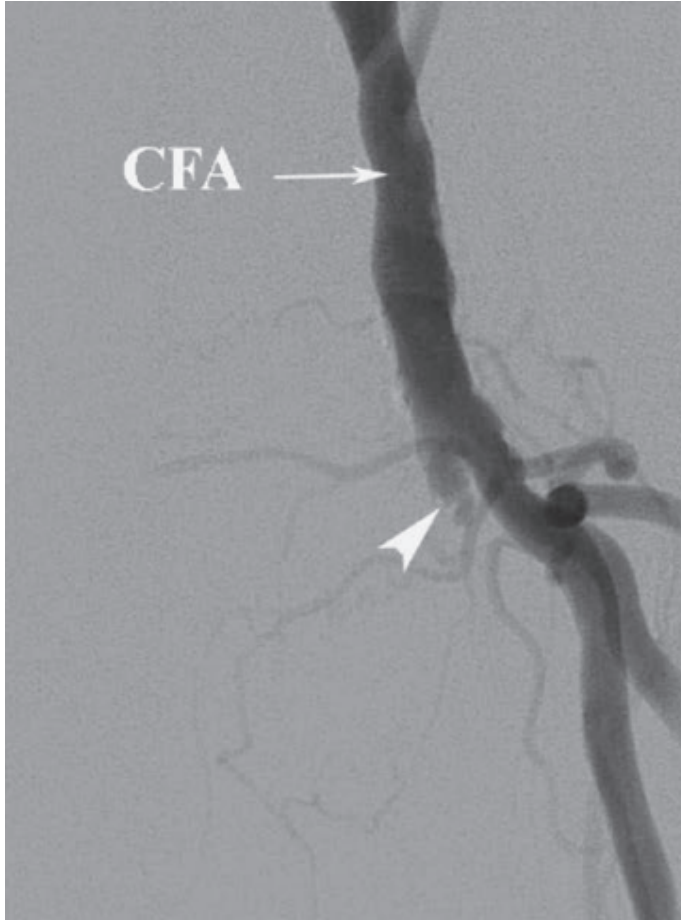


A



B





<16-10008>

